



# CLERMONT 3876

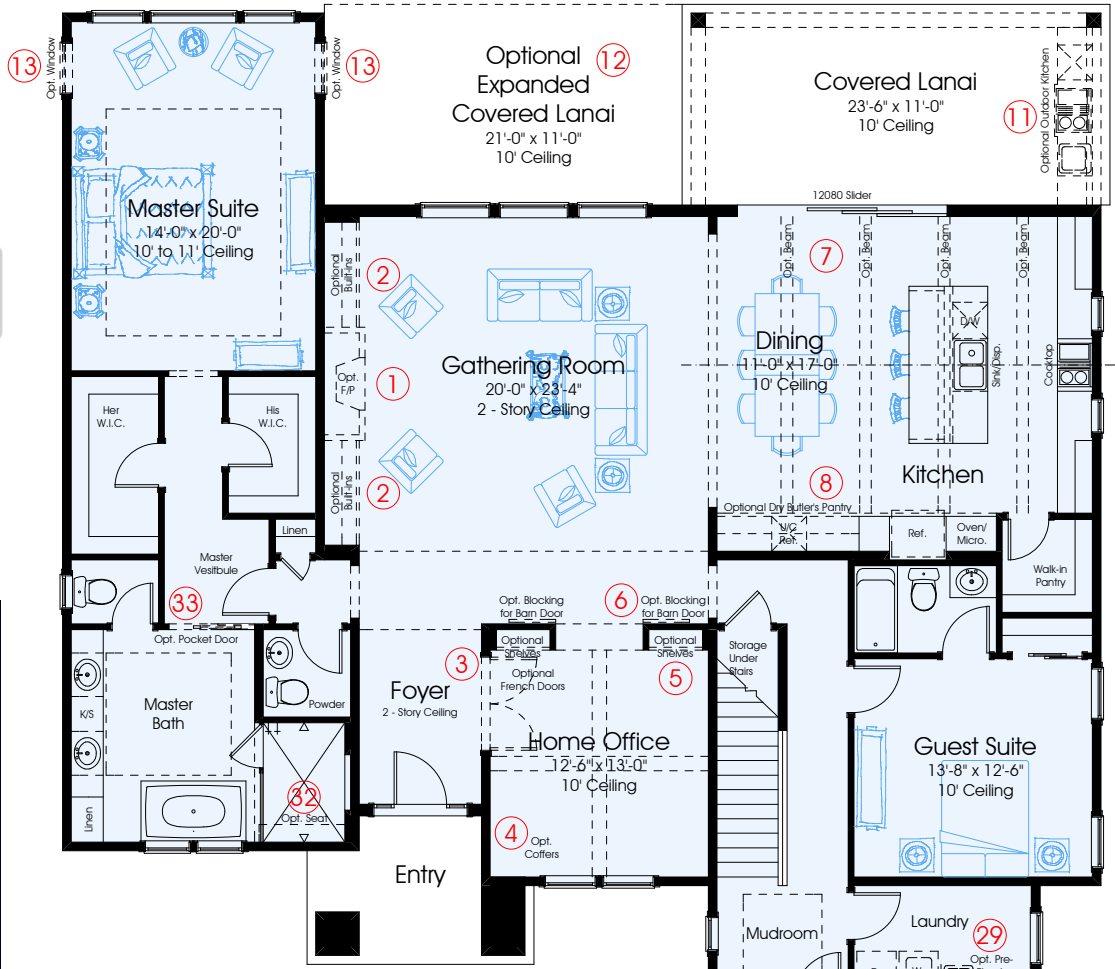


In the interest of continuous improvement, and to meet the changing market conditions, the builder reserves the right to modify the plans, specifications and products without notice or obligation. Square footage shown is an estimate and may vary. Depictions of homes and features are artist and designer conceptions. Landscape, interior surfaces and finishes may be decorator suggestions that are not included in purchase price. This ad contains general information about the community and is not an offer for the purchase of a new home.

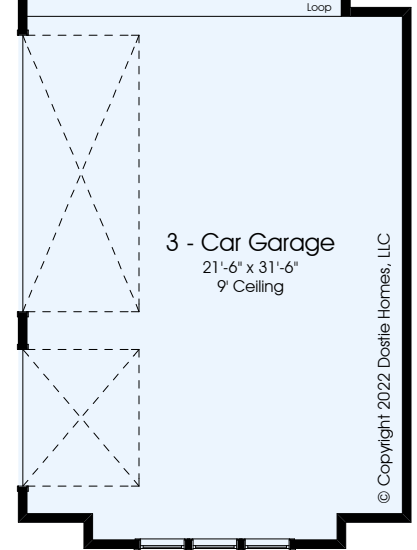
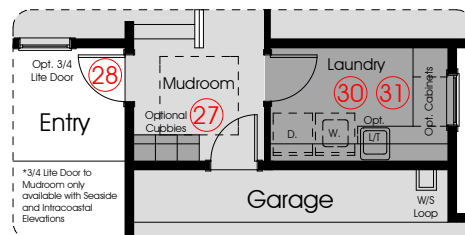
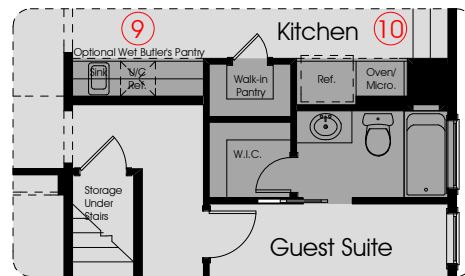
## Options Shown:

- 1) Optional Fireplace
- 2) Optional Built-ins
- 3) Optional Double French Doors at Home Office
- 4) Optional Coffered Ceiling at Home Office
- 5) Optional Book Shelves at Home Office
- 6) Optional Blocking for Barn Doors at Home Office
- 7) Optional (4) Beams at Kitchen and Dining
- 8) Optional Dry Butler's Pantry at Dining
- 9) Optional Wet Butler's Pantry at Dining
- 10) Alternate Kitchen and Guest Bath Layout
- 11) Optional Plumbing, Electrical for Future Outdoor Kitchen on Lanai
- 12) Optional Expanded Covered Lanai
- 13) Optional Window at Master Bedroom
- 14) Optional French Door at Master Bedroom
- 15) Optional 16080 Stacking Slider i.l.o. (3) Windows
- 16) Optional 16080 Stacking Slider i.l.o. 12080 Slider
- 17) Optional Cabana and Full Bath (376 Sq. Ft.)
- 18) Optional Expanded Bedroom 4 and Bathroom 6
- 19) Optional (2) Full Baths i.l.o. Jack and Jill Bath
- 20) Optional Expanded Bedroom 3 i.l.o. J&J Bath
- 21) Optional Double Doors at Bonus Room
- 22) Optional Drywall Beams at Gathering Room
- 23) Optional Drybar at Bonus Room
- 24) Optional Wetbar at Bonus Room
- 25) Optional Bonus Loft and Bedroom 5 with Full Bath i.l.o. Bonus Room
- 26) Optional Shower and Glass Enclosure
- 27) Optional Cubbies at Mudroom
- 28) Optional 3/4 Lite Door at Mudroom
- 29) Pre-Plumb for L/T at Laundry Room
- 30) Optional Built-in L/T at Laundry Room
- 31) Optional Cabinets at Laundry Room
- 32) Optional Seat in Shower at Master Shower
- 33) Optional Pocket Door at Master Bathroom
- 34) Optional Seat in Shower at Pool Bath
- 35) Optional Pocket Door at Bathroom 6

1st FLOOR A/C:	2557
2nd FLOOR A/C:	1319
TOTAL A/C:	3876
COVERED PORCHES:	413
GARAGES:	711
TOTAL COVERED:	5000



## Alternate Kitchen and Guest Bath Layout



First Floor Plan - Coastal