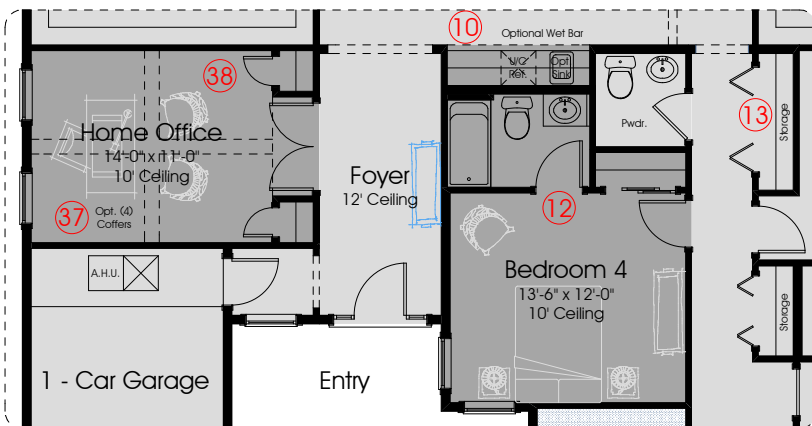
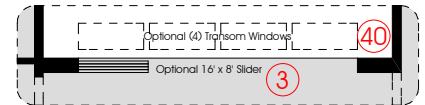
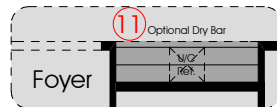
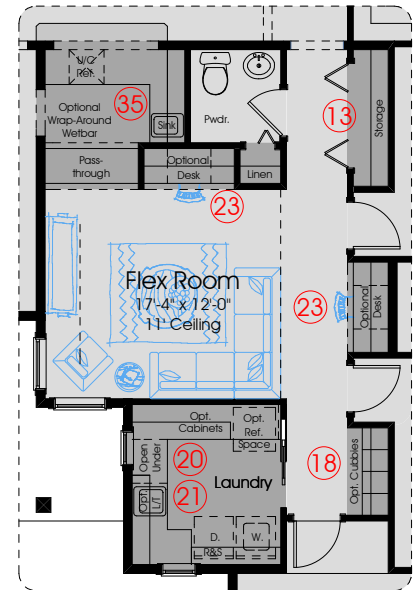
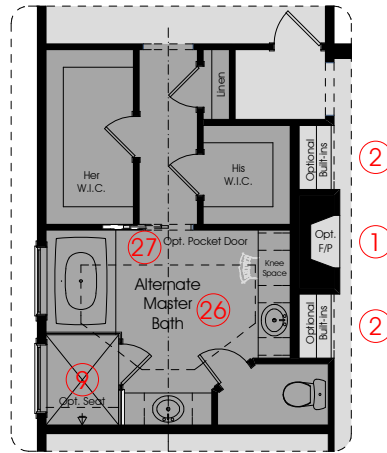
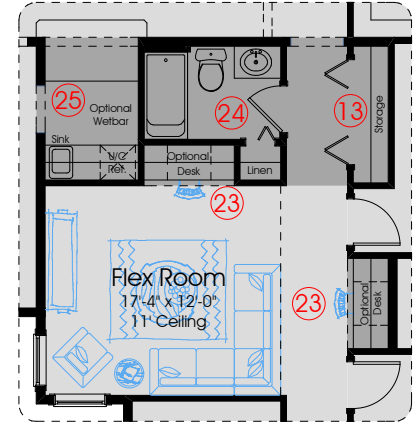
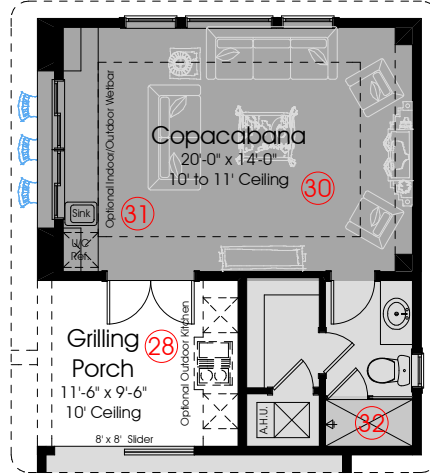
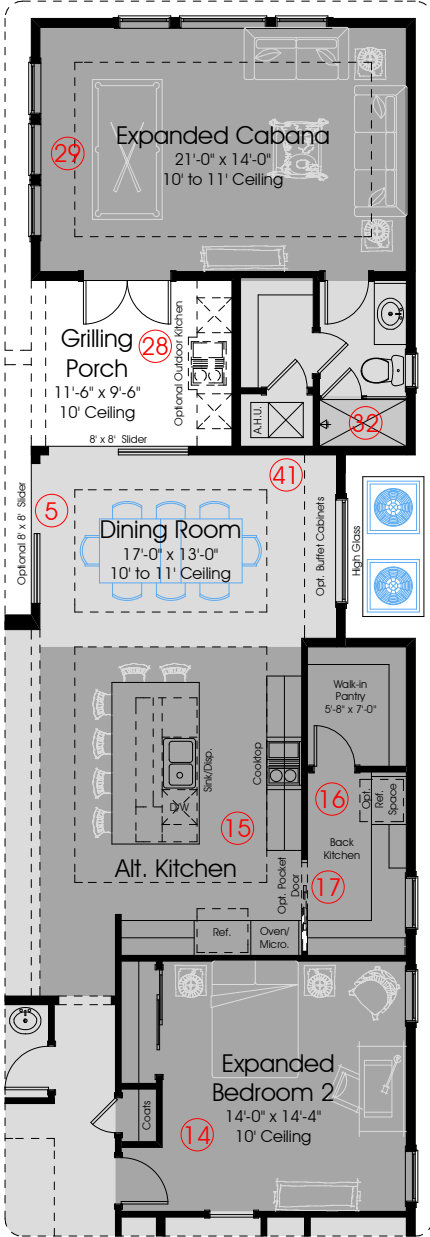


3490 Pre-Planned Options



In the interest of continuous improvement, and to meet the changing market conditions, the builder reserves the right to modify the plans, specifications and products without notice or obligation. Square footage shown is an estimate and may vary. Depictions of homes and features are artist and designer conceptions. Landscape, interior surfaces and finishes may be decorator suggestions that are not included in purchase price. This ad contains general information about the community and is not an offer for the purchase of a new home.

Options Shown Continued:

- 24) Optional Bathroom 4 i.l.o. Powder Room
- 25) Optional Pass-Through Wetbar
- 26) Optional Alternate Master Bathroom
- 27) Optional Pocket Door at Master Bath
- 28) Optional Plumbing, Electrical on a Venting for Future Outdoor Kitchen on Lanai
- 29) Optional Expanded Cabana
- 30) Optional Copacabana
- 31) Optional Indoor/Outdoor Wetbar
- 32) Optional Shower and Glass Enclosure
- 33) Optional Mini-Drybar at Cabana
- 34) Optional Mini-Wetbar at Cabana
- 35) Optional Wrap-Around Wetbar
- 36) Optional (6) Coffers at Home Office
- 37) Optional (4) Coffers at Home Office
- 38) Optional French Doors and Closets
- 39) Optional (3) Transom Windows
- 40) Optional (4) Transom Windows
- 41) Optional Buffet Base Cabinets

HIGHLIGHTS:

A rocky coastline, sandy beaches and mountains including the tallest mountain on the eastern coastline.