

On Your Lot

QUALITY INCLUDED FEATURES AND BENEFITS

SITE CHARACTERISTICS

- Lot Clearing Allowance up to \$4,500.00
- Lot Fill Up to 50 Truckloads
- Community Lighting and Sidewalks
- Landscaped Common Areas
- Underground Utilities Including Public Water & Sewer
- Professional Landscape Package Allowance up to \$16,500.00
- Zoned Irrigation System with Automatic Timer
- Concrete Paver Driveway & Walkway to Homes

EXTERIOR DETAILS

- Full Hardilap Cementitious Siding, Brick or Stucco (Per Plan, Elevation and Design)
- 30 Year Owens Corning Architectural Shingles
- Six Panel Fiberglass Entry Door and Sidelights (Per Plan)
- Satin Nickel Handle Set on Front Entry Door
- Dead Bolt on Exterior Doors
- Maintenance Free Vinyl Porch Ceilings and Soffits
- 3 Car Garage (Per Plan)
- 2 Garage Door Openers with Remote
- 3 Weatherproof GFI Outlets at Exterior
- 2 Hose Bibs
- Exterior Flood Lights and Carriage Lights (Per Plan)
- Water Softener Loop
- Rain Gutter on Front of Home (Per Plan and Elevation)
- Innovative ZIPSystem™ with Built In Protective Overlay
- High Efficiency Radiant Barrier Roof Sheathing
- Finished Garages

KITCHENS/BATHS

- Full Overlay Maple Wood Cabinetry with 42" Uppers and Crown Moulding in Kitchen
- Soft Close Cabinet Drawers in Kitchen & Master
- Island Unit in Kitchen
- Tight Mesh Vinyl Shelving in Pantry
- Undermount Stainless Steel Double Basin Sink with MOEN® Arbor Spot Resistant Stainless Faucet at Kitchen
- MOEN® Brantford or Eva Chrome 4" Centerset Faucets at all Secondary Baths
- MOEN® Brantford or Eva Chrome Widespread Faucets at Master Bath & Powder Room (Per Plan)
- Choice of Granite or Quartz Countertops in Kitchen (Multiple Color Options)
- GE™ Profile™ Gourmet Kitchen Package with Gas Cooktop, Dishwasher, Built-In Microwave/Self-Cleaning Convection Oven Tower Combination and 1/2 HP Garbage Disposal
- LED Recessed Can Lighting in Kitchen
- Ice-Maker Connection
- 18" x 18" Ceramic Tile Flooring in All Bathrooms, Kitchen & Nook
- Fully Tiled Shower Surrounds
- Choice of Granite or Quartz Countertops in Master Bath (Multiple Color Options)
- Level One Solid Surface Countertops in Secondary Baths
- Full Width Vanity Mirrors in All Baths
- Beveled Mirror Accent Strips in Master Bath
- 5' Soaking Tub with Tiled Deck in Master Bath
- Private Water Closet in Master Bath
- Beveled Mirror Medicine Cabinets in All Baths (Per Plan)
- Elongated Toilets in All Baths

On Your Lot

QUALITY INCLUDED FEATURES AND BENEFITS

INTERIOR FINISHES

- 36" Gas F/P With Tiled Hearth and Custom Wood Mantle
- Raised Two Panel, Hollow Core, Interior Doors Throughout
- 8' Tall Doors & Room Openings on First Floor, 6' 8" Tall Door & Room Openings on Second Floor (Per Plan)
- Satin Nickel Interior Door Hardware Throughout
- Rocker-Style Light Switches
- Coffered and Tiered Ceilings (Per Plan)
- 10' Ceilings First Floor, 9' Ceilings on Second Floor (Per Plan)
- Crown Moulding in Home Office, Dining Room, Foyer and Master Bedroom (Per Plan)
- Chair Rail and Picture Moulding in Dining Room
- Custom Wood Window Sills Throughout
- 5 1/4" Baseboards and 3 1/4" Colonial Door Casing Throughout
- Double Knock Down Texture Finish on Ceilings
- Ceramic Tile Floor in Foyer and Laundry
- Pull Down Attic Access Stairs with Floored Storage over Garage (Per Plan)
- Ceiling Fan Pre-Wire in Gathering Room, All Bedrooms, Bonus Loft, and Lanai (Per Plan)
- Luxurious Carpet with 6 lb pad, 10 yr. Quality Assurance Warranty and Inherent Stain Resistance
- Base Cabinet with Built-In Laundry Sink

ENERGY SAVING FEATURES

- High Efficiency Radiant Barrier Roof Sheathing
- 3rd Party HERS Energy Efficiency Rating
- R-30 Ceiling Insulation, R-19 Exterior Wall Insulation
- Double Glazed Vinyl Insulated Low-E Windows with Screens
- Carrier High Efficiency 14 SEER Heat Pump System
- High Efficiency Tankless Gas Water Heater
- Sill Seal Floor Plate Insulation
- Energy Efficient Off Ridge Roof Venting
- Gas Package with 5 Connections: Cooktop, Grill, Dryer, Water Heater & Fireplace
- Interior Air Handler(s) (Per Plan)

WARRANTY

- 2-10 Home Buyers Warranty
- Borate Termite Treatment With Repair & Replacement Warranty and 1 Yr.- \$1,000,000 Repair Bond

TECHNOLOGICAL ADVANTAGES

- Wireless Security System with Digital Touchscreen Keypad and Optional Alarm.com Smart Home Automation Integration Features
- Contacts at All 1st Floor Windows & Doors
- Doorbell and Chime
- Structured Wiring Package: (8) CAT-5 Phone/Data and Cable RG-6 Connections
- Surround Sound Prewire at Gathering Room
- Stereo Speaker Prewire at Master & Lanai

PERSONAL DESIGN TIME

- Consultation with Architectural Designer for Personalization of Your New Home
- Up to Six Hours with Professional Interior Design Consultant for Color and Finish Selection
- Pre-Drywall Orientation
- Pre-Closing Orientation



CBC #1258744

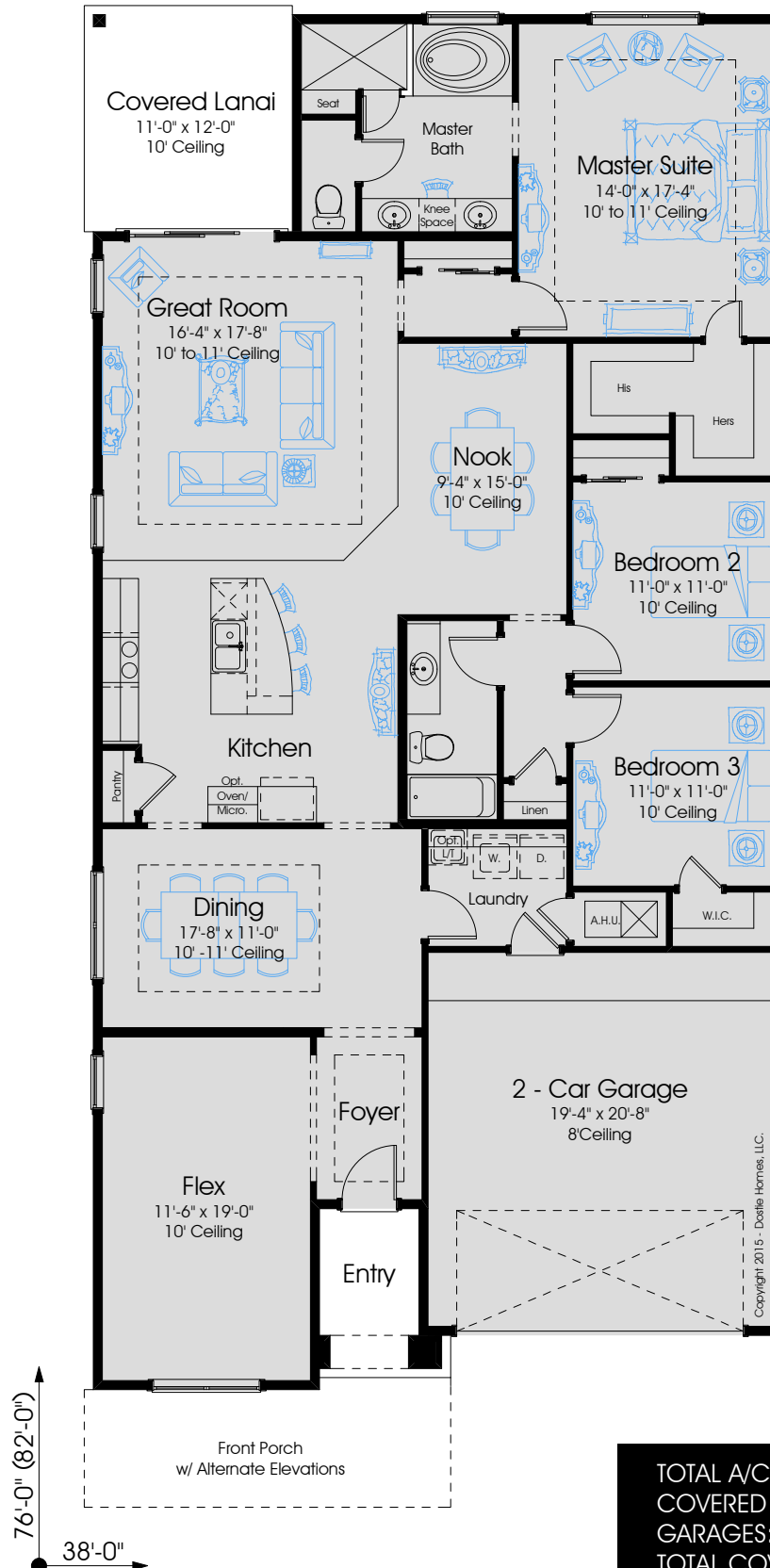
Prices and features subject to change without notice. Please see New Home Consultant for details.

07/07/2016

EMERSON 2225



Classic Series



3



2



2

In the interest of continuous improvement, and to meet the changing market conditions, the builder reserves the right to modify the plans, specifications and products without notice or obligation. Square footage shown is an estimate and may vary. Depictions of homes and features are artist and designer conceptions. Landscape, interior surfaces and finishes may be decorator suggestions that are not included in purchase price. This ad contains general information about the community and is not an offer for the purchase of a new home.

TOTAL A/C:	2225
COVERED PORCHES:	183
GARAGES:	416
TOTAL COVERED:	2824

RALPH WALDO EMERSON (1803-1882)

American essayist, lecturer and poet. Champion of individualism. Delivered more than 1500 public lectures.

EMERSON 2225



THE
CROSSING
AT TWENTY MILE



3



2



2



Coastal



Americana



In the interest of continuous improvement, and to meet the changing market conditions, the builder reserves the right to modify the plans, specifications and products without notice or obligation. Square footage shown is an estimate and may vary. Depictions of homes and features are artist and designer conceptions. Landscape, interior surfaces and finishes may be decorator suggestions that are not included in purchase price. This ad contains general information about the community and is not an offer for the purchase of a new home.



Prairie



Vineyard

The Emerson is a 1-story home with 2,225 sq. ft. of living area, a 2-car garage, 3 bedrooms and 2 baths. Upon entering the home the Foyer leads to the open Dining Room and Flex Room with the Kitchen, Nook and Great Room beyond. A large Covered Lanai is located at the rear of the home. The master suite and ensuite bathroom has a huge walk-in closet for the homeowner. Two secondary bedrooms share a hall bath. A private Study and Powder Room or a Fourth Bedroom and Bath available as options for this very versatile home.

Building on over **55 YEARS** *of Dostie Family Tradition*

HEMINGWAY 2749



THE
CROSSING
AT TWENTY MILE



5



2.5



2



Vineyard



Coastal (Shown with optional porch railing)



In the interest of continuous improvement, and to meet the changing market conditions, the builder reserves the right to modify the plans, specifications and products without notice or obligation. Square footage shown is an estimate and may vary. Depictions of homes and features are artist and designer conceptions. Landscape, interior surfaces and finishes may be decorator suggestions that are not included in purchase price. This ad contains general information about the community and is not an offer for the purchase of a new home.



Prairie



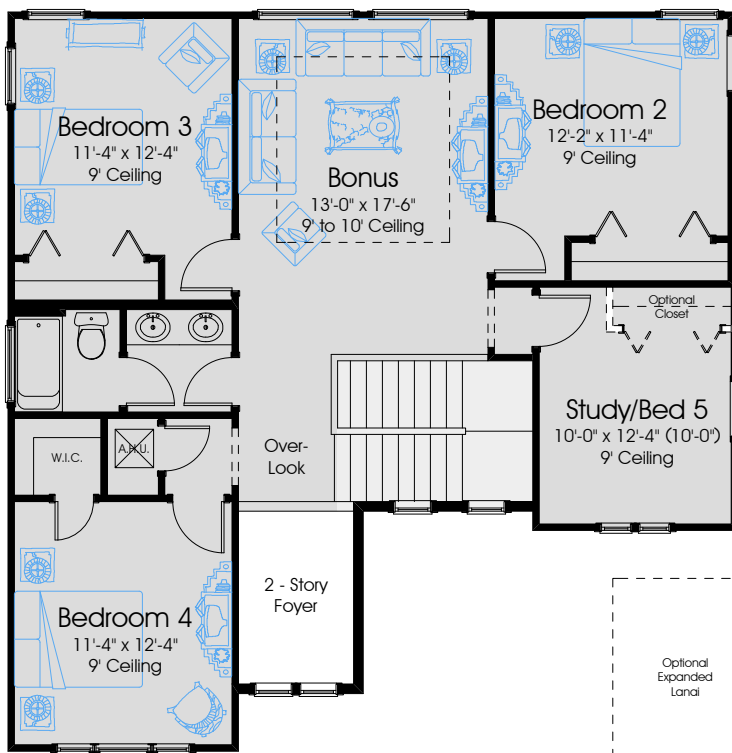
Farmhouse

The Hemingway is a 2-story home with 2,749 sq. ft. of living area, a 2-car garage, 4 bedrooms and 2.5 baths. Upon entering the home the 2-story foyer and Flex Room greet visitors while the Kitchen, Nook and Great Room are perfect for entertaining. A large Covered Lanai is located at the rear of the home. The master suite and ensuite bathroom has two walk-in closets for the homeowners. Upstairs, three or four secondary bedrooms share a hall bath and Bonus Loft. Finally, a Mudroom and Laundry are located in a private area of the home. An optional Guest Suite and Bath are available upstairs for this home.

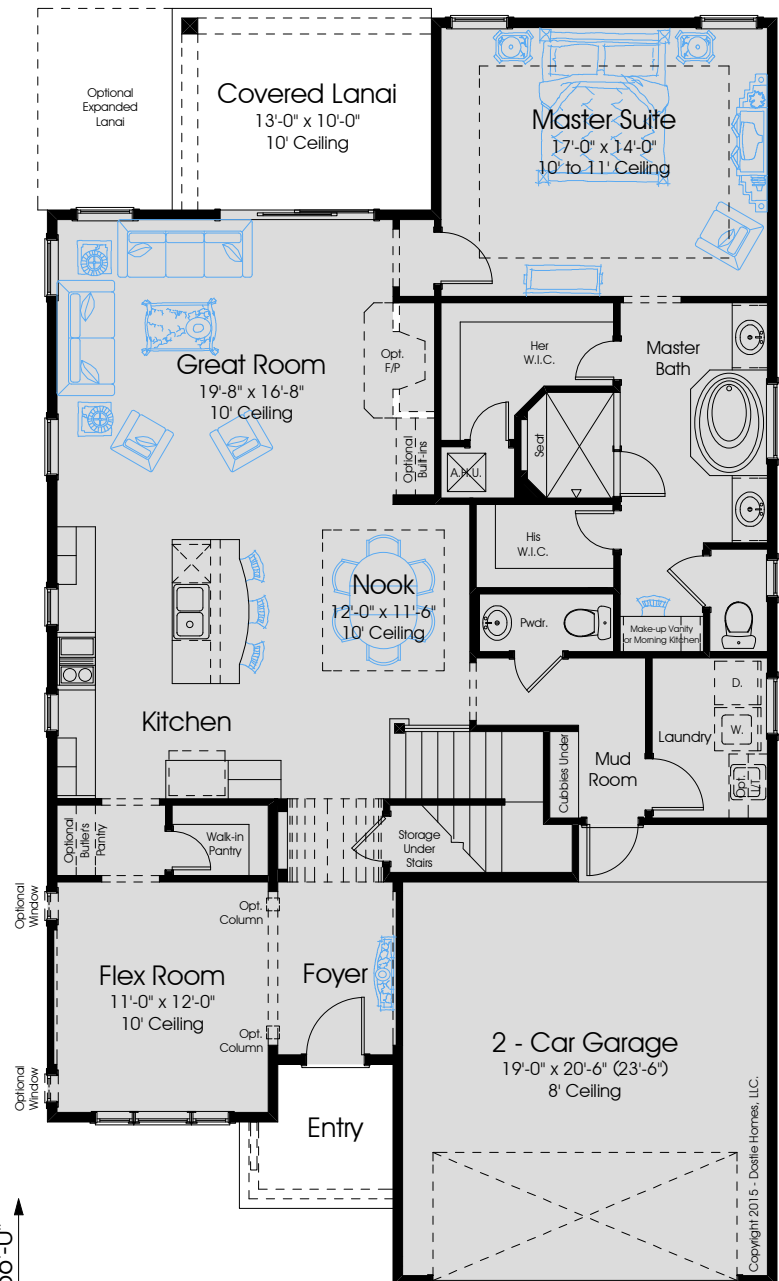
Building on over **55 YEARS** *of Dostie Family Tradition*



Classic Series



Second Floor Plan



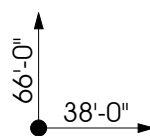
First Floor Plan

HEMINGWAY

2749

In the interest of continuous improvement, and to meet the changing market conditions, the builder reserves the right to modify the plans, specifications and products without notice or obligation. Square footage shown is an estimate and may vary. Depictions of homes and features are artist and designer conceptions. Landscape, interior surfaces and finishes may be decorator suggestions that are not included in purchase price. This ad contains general information about the community and is not an offer for the purchase of a new home.

FIRST FLOOR A/C:	1691
SECOND FLOOR A/C:	1058
TOTAL A/C:	2749
COVERED PORCHES:	269
GARAGES:	435
TOTAL COVERED:	3561



Copyright 2015 - Dostie Homes, LLC.



Chateau

In the interest of continuous improvement and to meet the changing market conditions, the builder reserves the right to modify the plans, specifications and products without notice or obligation. Actual dimensions may vary.



Mediterranean



Traditional



CBC #1258744



DOSTIEHOMES

TOTAL A/C:	2925
COV. PORCHES:	232
GARAGE:	824
TOTAL COVERED:	3981

Optional
Expanded
Lanai
9'-0" x 16'-0"
10' Ceiling

Optional Comfort
Zone
17'-0" x 15'-6"
10' Ceiling

[illegible]

In the interest of continuous improvement and to meet the changing market conditions, the builder reserves the right to modify the plans, specifications and products without notice or obligation. Actual dimensions may vary.



3204 Porches

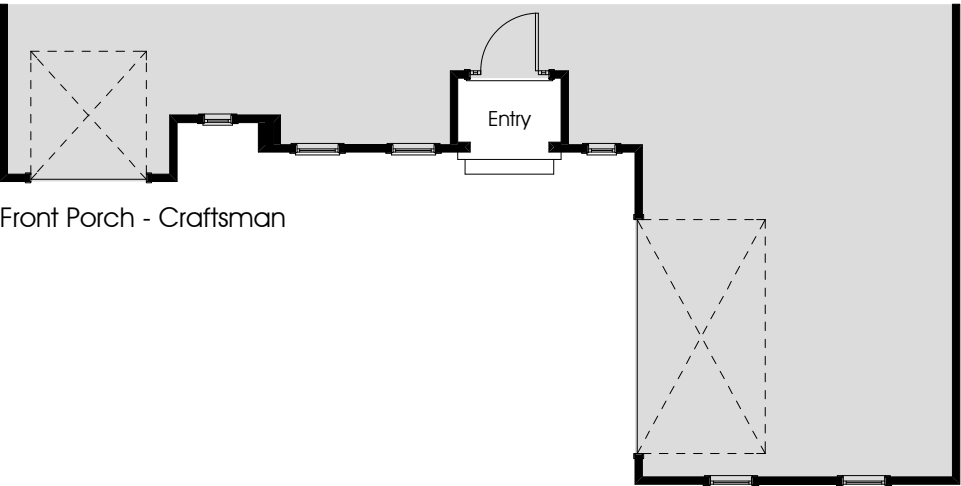


Classic Collection

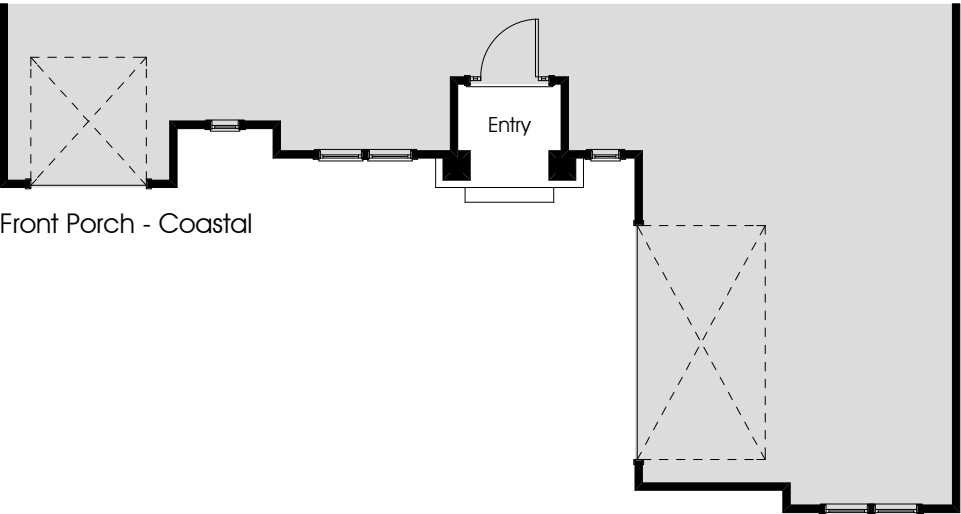
WILDER 3204



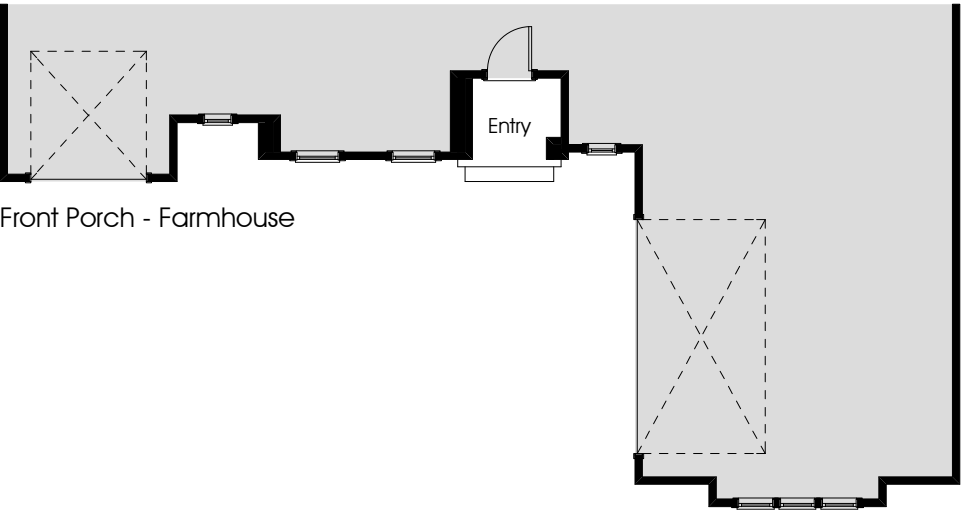
THE RANCH
AT TWENTY MILE



Front Porch - Craftsman



Front Porch - Coastal



Front Porch - Farmhouse

In the interest of continuous improvement, and to meet the changing market conditions, the builder reserves the right to modify the plans, specifications and products without notice or obligation. Square footage shown is an estimate and may vary. Depictions of homes and features are artist and designer conceptions. Landscape, interior surfaces and finishes may be decorator suggestions that are not included in purchase price. This ad contains general information about the community and is not an offer for the purchase of a new home.


4


4

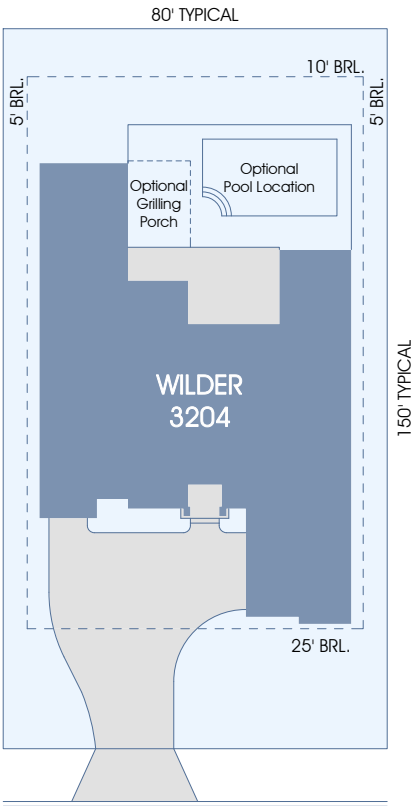

3



Coastal



Farmhouse



80' x 150' Typical Site Layout

In the interest of continuous improvement, and to meet the changing market conditions, the builder reserves the right to modify the plans, specifications and products without notice or obligation. Square footage shown is an estimate and may vary. Depictions of homes and features are artist and designer conceptions. Landscape, interior surfaces and finishes may be decorator suggestions that are not included in purchase price. This ad contains general information about the community and is not an offer for the purchase of a new home.



Craftsman



Vineyard

The Wilder is a 1-story home with 3,204 sq. ft. of living area, 4 bedrooms and 4 baths. Upon entering the home, a formal dining room and evolution space flank the foyer which opens into the spacious gathering room. The kitchen allows for open access to the informal dining nook and gathering room. A comfort zone with guest suite off the nook allows for additional versatility and can be utilized in a number of ways.



Classic Collection



4



4



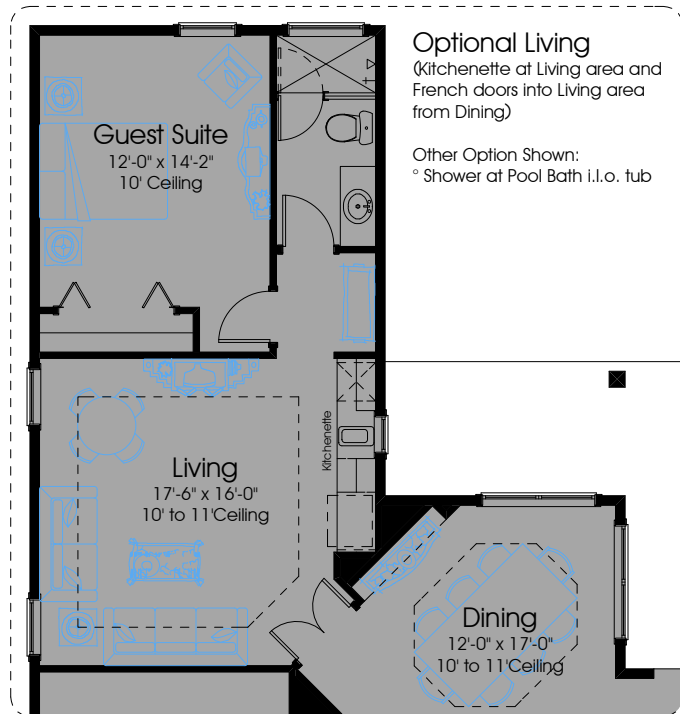
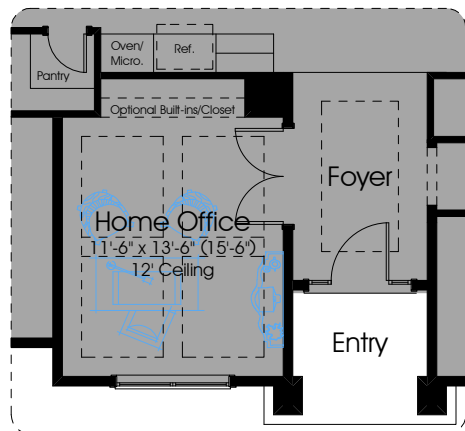
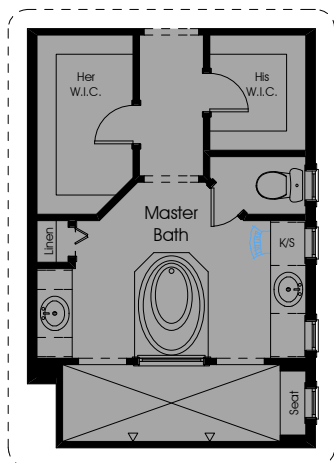
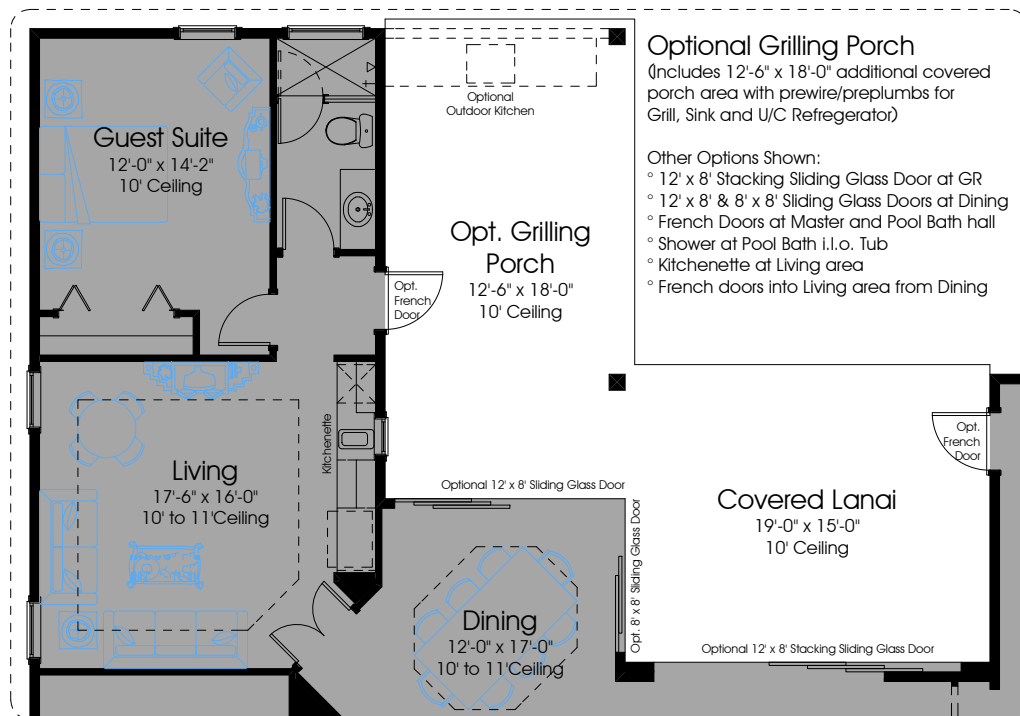
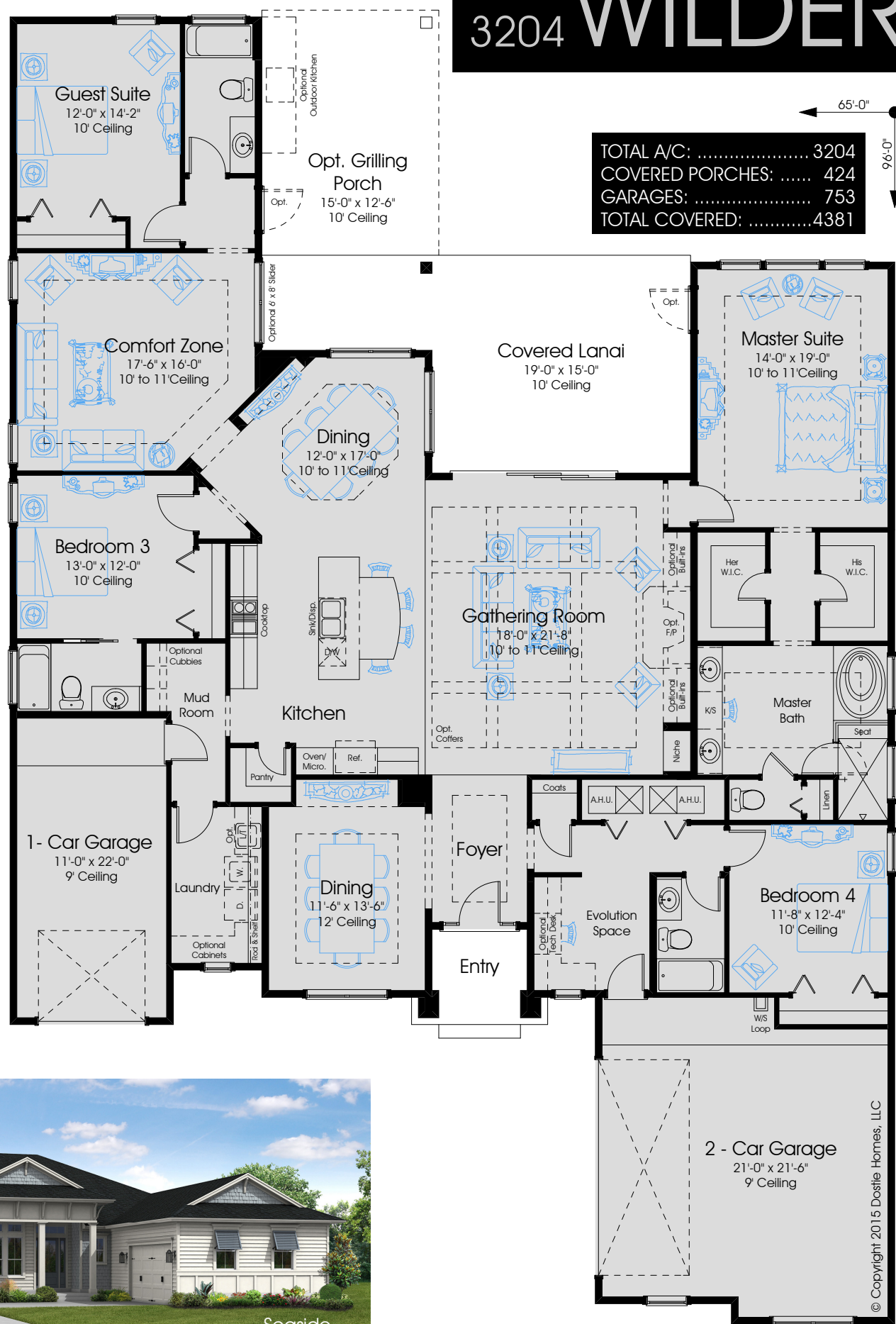
3

3204 WILDER

3204 Pre-Planned Options

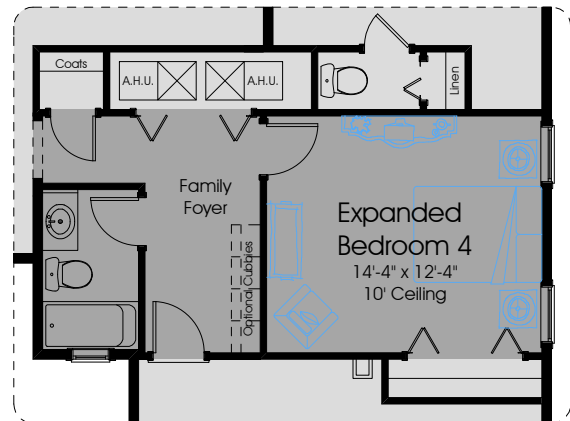


Classic Collection



Optional Expanded Bedroom 4 (Expands Bedroom 4 and relocates bathroom)

Optional cubbies available in Family Foyer)



Seaside

In the interest of continuous improvement, and to meet the changing market conditions, the builder reserves the right to modify the plans, specifications and products without notice or obligation. Square footage shown is an estimate and may vary. Depictions of homes and features are artist and designer conceptions. Landscape, interior surfaces and finishes may be decorator suggestions that are not included in purchase price. This ad contains general information about the community and is not an offer for the purchase of a new home.

LAURA INGALLS WILDER (1867-1957)
American author, teacher, journalist and family farmer; Laura Ingalls Wilder Medal (est. 1954)

NOTED WORKS:
Little House on the Prairie series - Total of 8 Books (1932 - 1943); On the Way Home (1962, published posthumously)



CBC #1258744



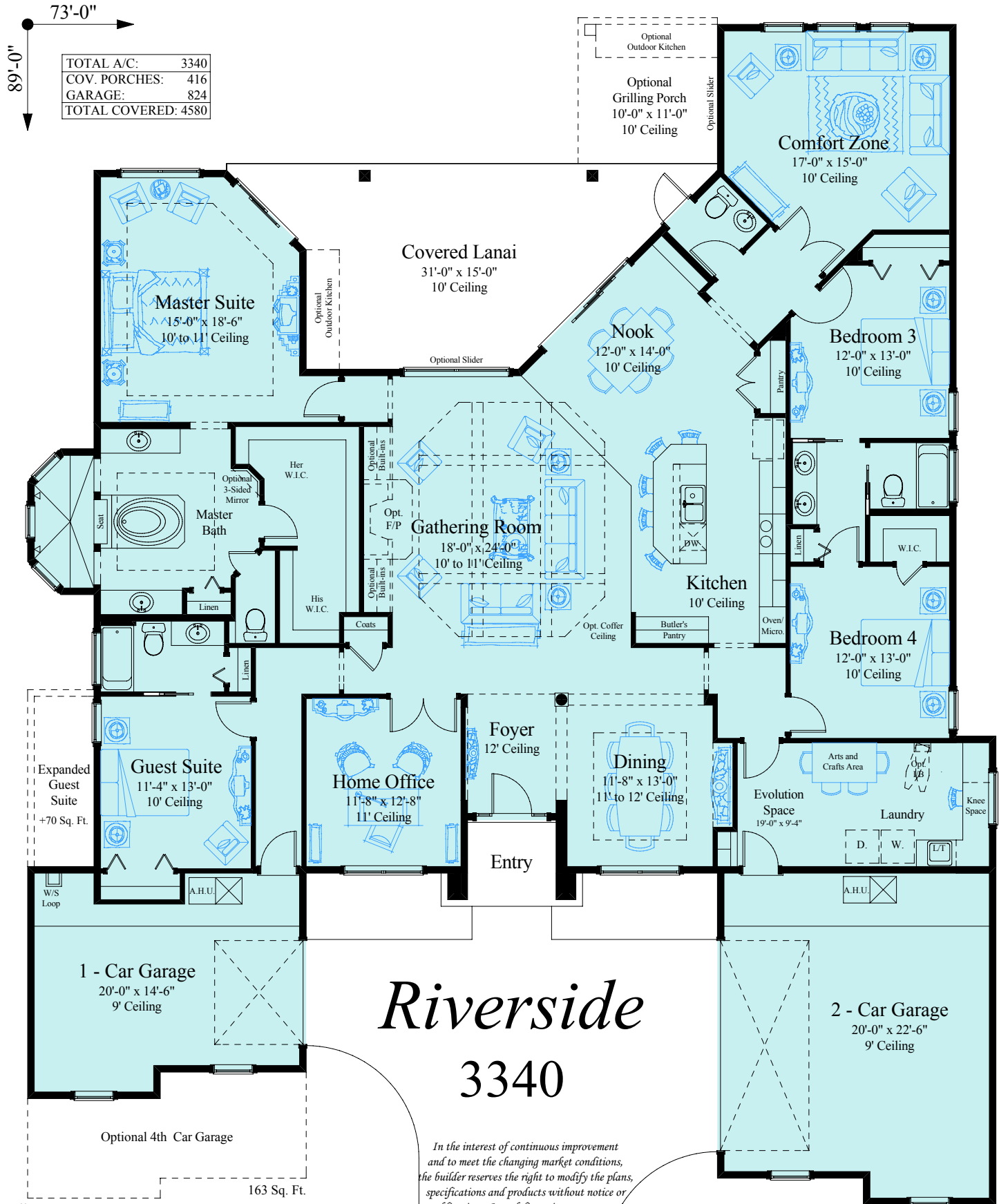
DOSTIEHOMES



CBC #1258744

DOSTIEHOMES

Building on over 50 YEARS of Dostie Family Tradition



Riverside 3340

In the interest of continuous improvement and to meet the changing market conditions, the builder reserves the right to modify the plans, specifications and products without notice or obligation. Actual dimensions may vary.



CBC #1258744 October 22, 2013



DOSTIEHOMES

DOSTIEHOMES.COM • 9301 OLD KINGS ROAD SOUTH • JACKSONVILLE, FL 32257 • (904) 739-9121 • FAX (904) 739-7292

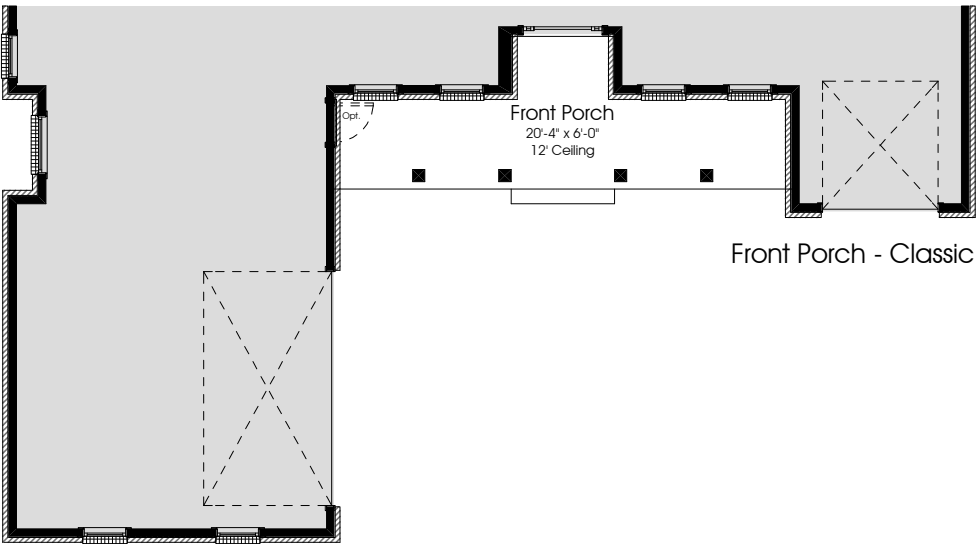
3536 Porches



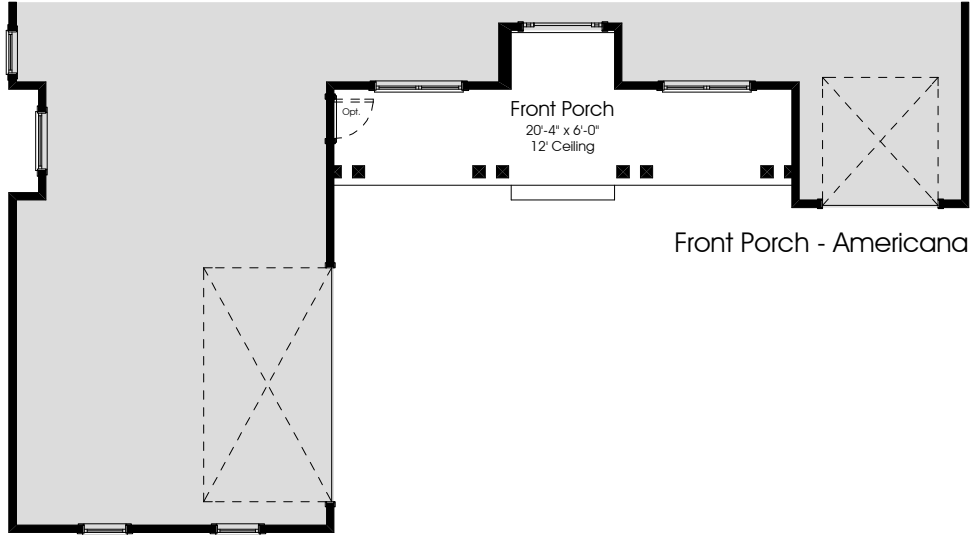
THOREAU 3536



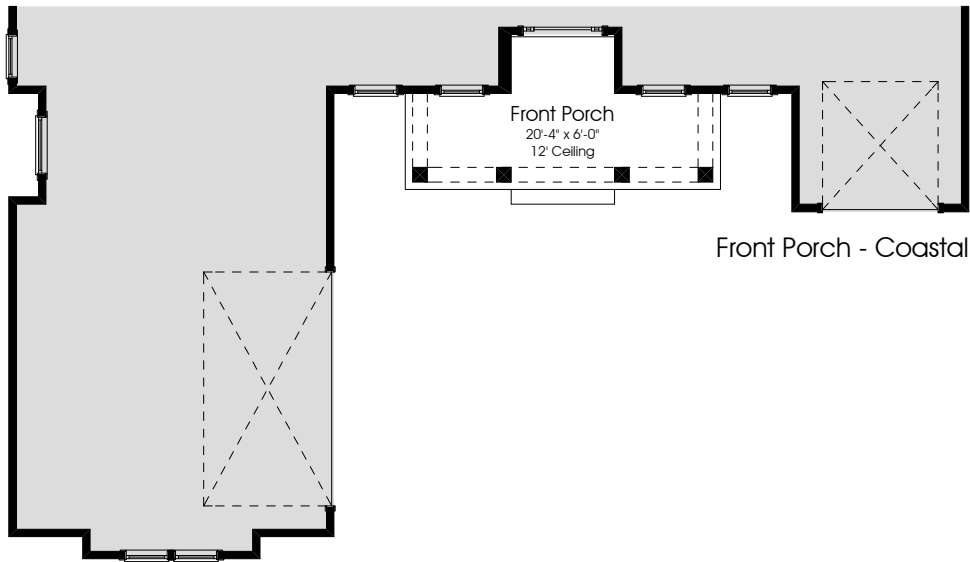
THE RANCH
AT TWENTY MILE



Front Porch - Classic

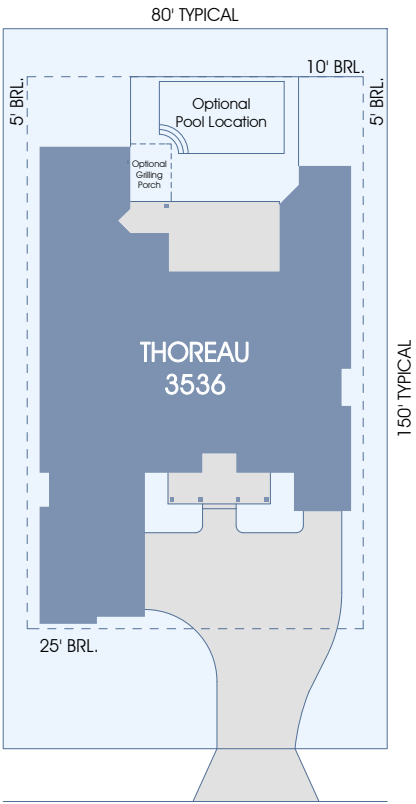


Front Porch - Americana



Front Porch - Coastal

In the interest of continuous improvement, and to meet the changing market conditions, the builder reserves the right to modify the plans, specifications and products without notice or obligation. Square footage shown is an estimate and may vary. Depictions of homes and features are artist and designer conceptions. Landscape, interior surfaces and finishes may be decorator suggestions that are not included in purchase price. This ad contains general information about the community and is not an offer for the purchase of a new home.



80' x 150' Typical Site Layout



Seaside

In the interest of continuous improvement, and to meet the changing market conditions, the builder reserves the right to modify the plans, specifications and products without notice or obligation. Square footage shown is an estimate and may vary. Depictions of homes and features are artist and designer conceptions. Landscape, interior surfaces and finishes may be decorator suggestions that are not included in purchase price. This ad contains general information about the community and is not an offer for the purchase of a new home.



Coastal



Classic



Vineyard

The Thoreau is a 1-story home with 3,536 sq. ft., 4 bedrooms & 3.5 baths. A formal dining room & home office flank the foyer which opens into a large gathering room, providing direct views onto the covered lanai. A large master suite w/ensuite bath offers a private retreat while secondary bedrooms are on the opposite side of the home. A comfort zone off the nook allows for additional versatility & can be utilized in a number of ways.



Classic Collection



4



3.5



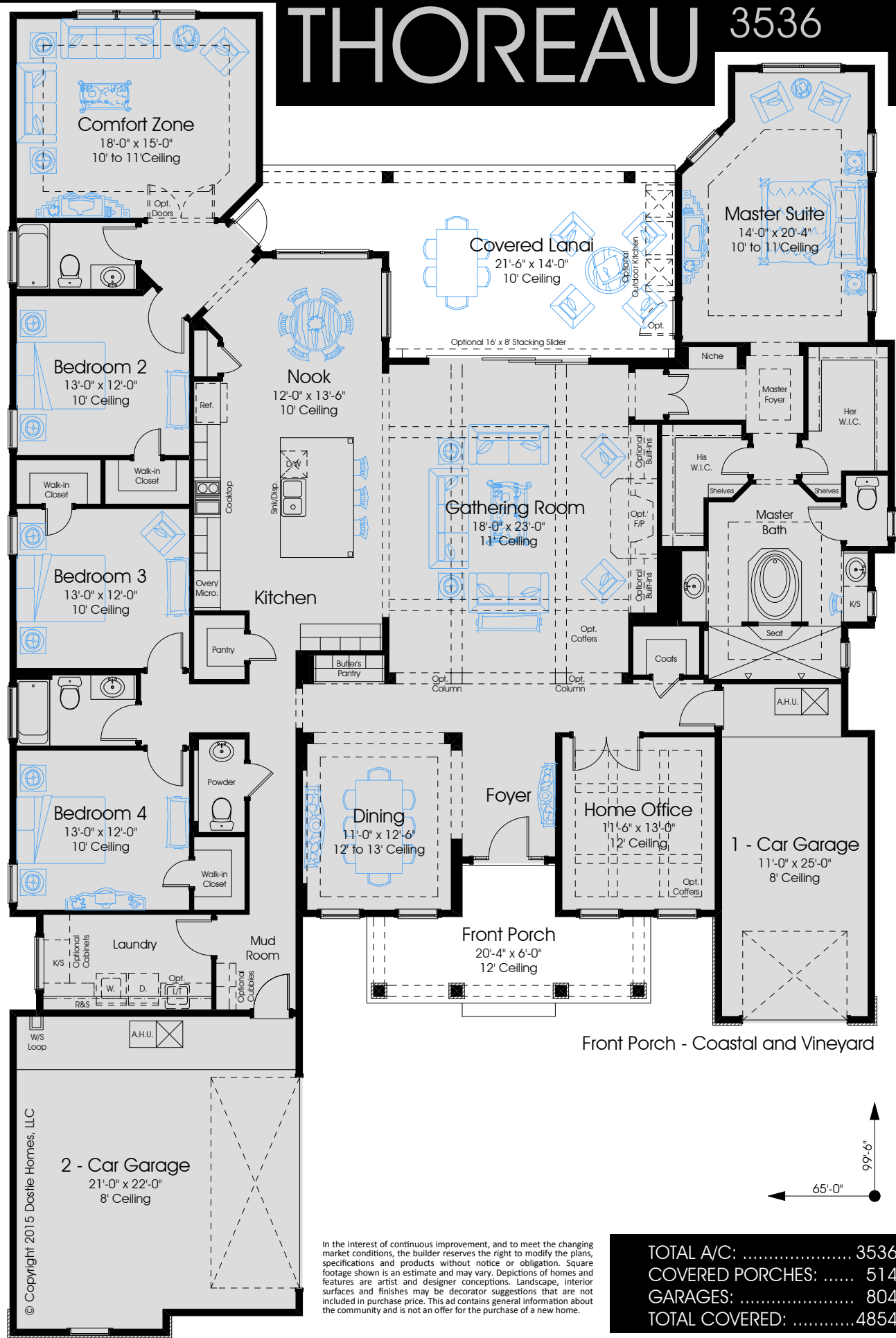
3

THOREAU 3536

3536 Pre-Planned Options

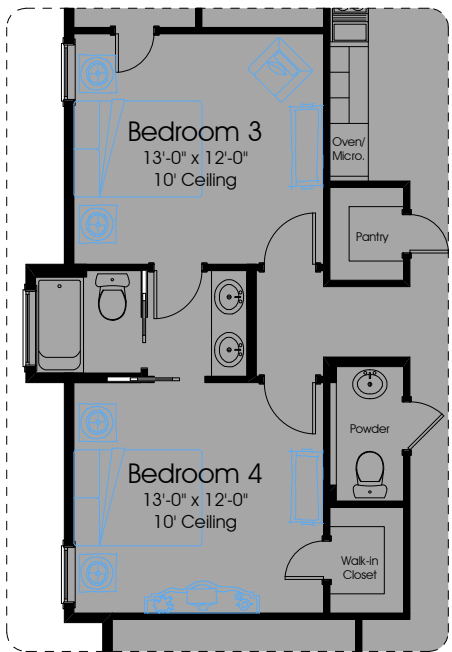
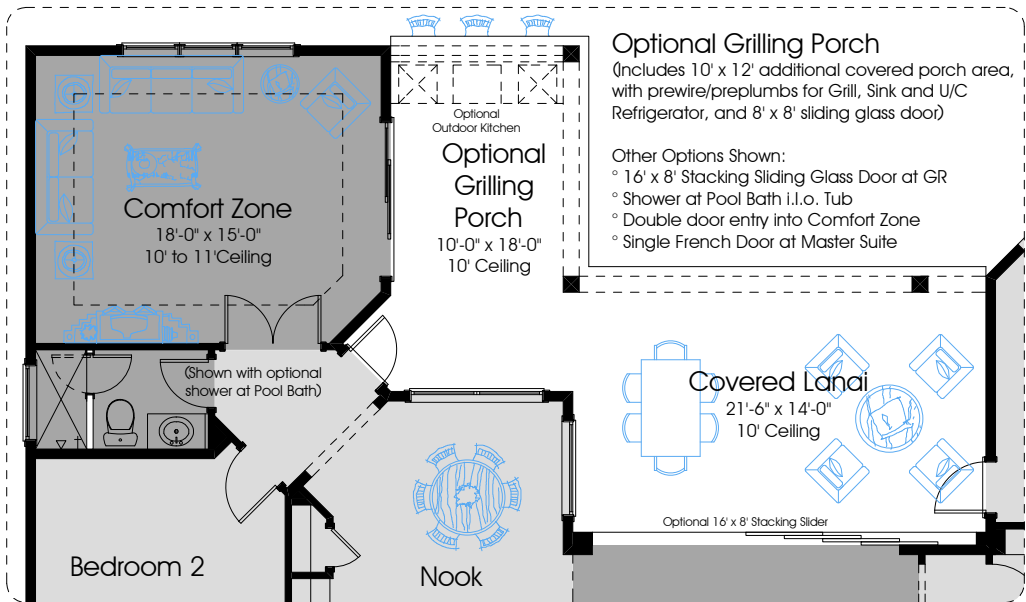


Classic Collection

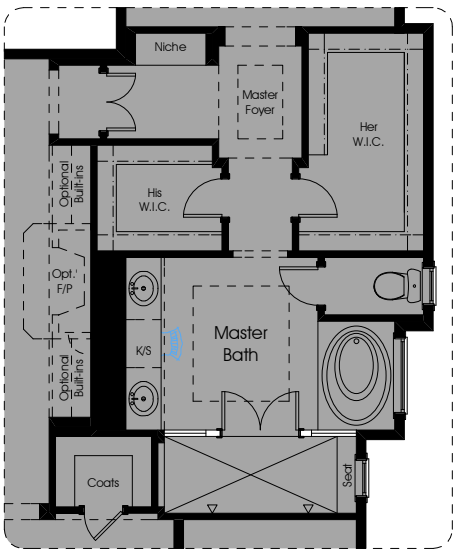


In the interest of continuous improvement, and to meet the changing market conditions, the builder reserves the right to modify the plans, specifications and products without notice or obligation. Square footage shown is an estimate and may vary. Depictions of homes and features are artist and designer conceptions. Landscape, interior surfaces and finishes may be decorator suggestions that are not included in purchase price. This ad contains general information about the community and is not an offer for the purchase of a new home.

TOTAL A/C: 3536
COVERED PORCHES: 514
GARAGES: 804
TOTAL COVERED: 4854



Optional Jack and Jill Bath



Optional Master Bath

In the interest of continuous improvement, and to meet the changing market conditions, the builder reserves the right to modify the plans, specifications and products without notice or obligation. Square footage shown is an estimate and may vary. Depictions of homes and features are artist and designer conceptions. Landscape, interior surfaces and finishes may be decorator suggestions that are not included in purchase price. This ad contains general information about the community and is not an offer for the purchase of a new home.

3730 Porches

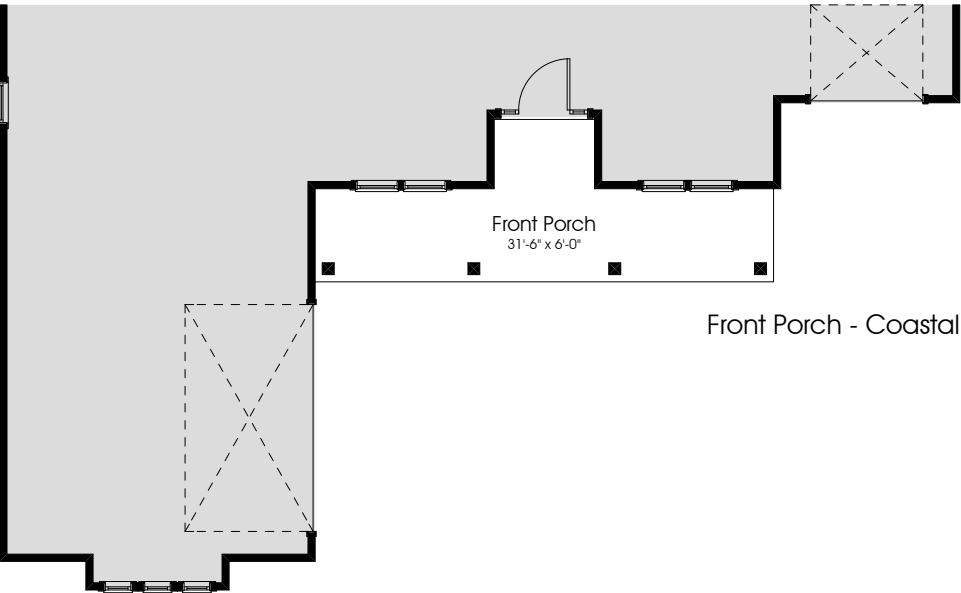


ANGELOU 3730

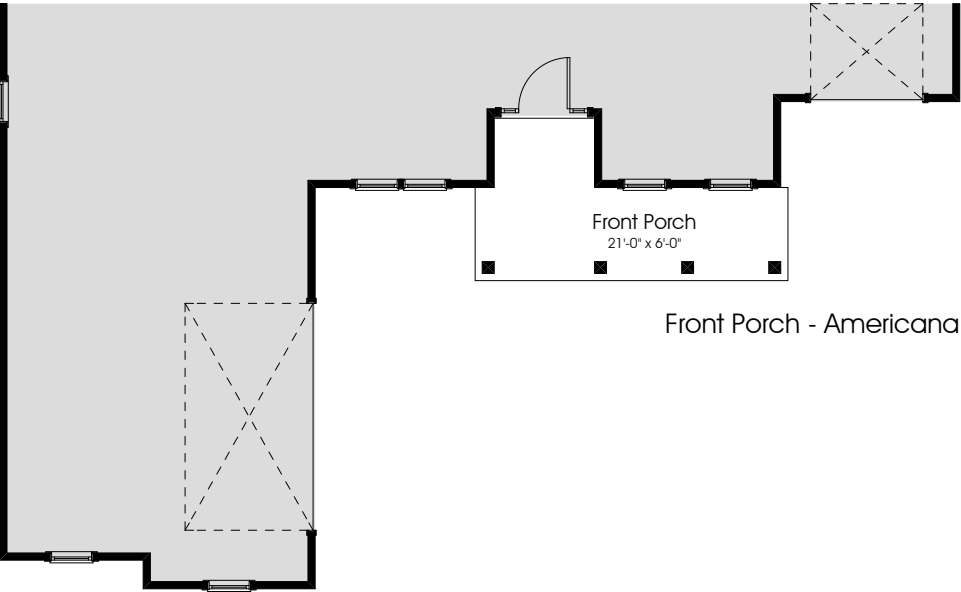

4


4.5

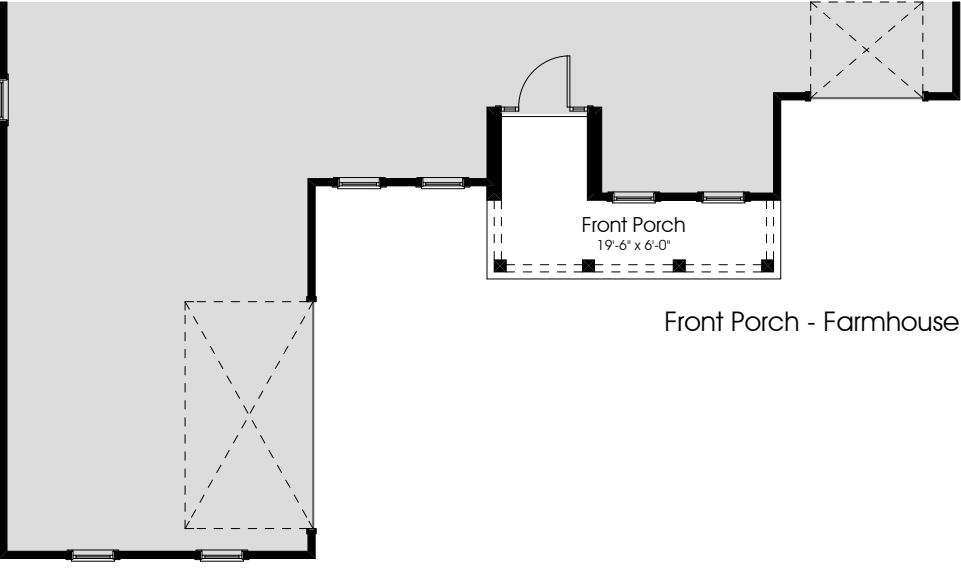

3



Front Porch - Coastal

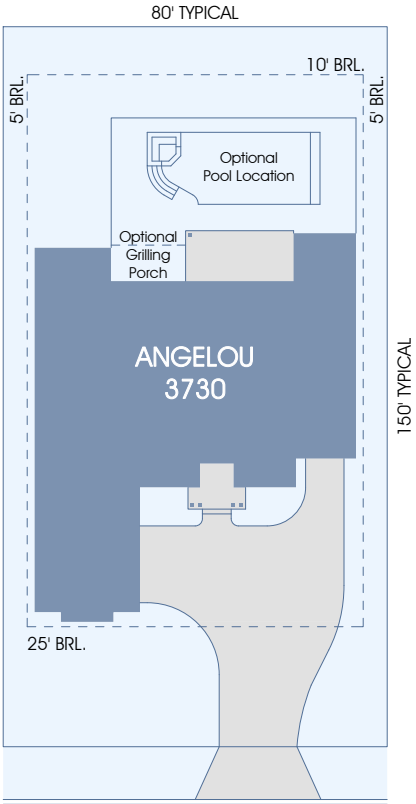


Front Porch - Americana



Front Porch - Farmhouse

In the interest of continuous improvement, and to meet the changing market conditions, the builder reserves the right to modify the plans, specifications and products without notice or obligation. Square footage shown is an estimate and may vary. Depictions of homes and features are artist and designer conceptions. Landscape, interior surfaces and finishes may be decorator suggestions that are not included in purchase price. This ad contains general information about the community and is not an offer for the purchase of a new home.



80' x 150' Typical Site Layout



Farmhouse

In the interest of continuous improvement, and to meet the changing market conditions, the builder reserves the right to modify the plans, specifications and products without notice or obligation. Square footage shown is an estimate and may vary. Depictions of homes and features are artist and designer conceptions. Landscape, interior surfaces and finishes may be decorator suggestions that are not included in purchase price. This ad contains general information about the community and is not an offer for the purchase of a new home.



Seaside



Vineyard



Americana

The Angelou is a 2-story home with 3,730 sq. ft. of living area, 4 bedrooms and 4.5 baths. A formal dining room and a home office flank the foyer which opens into a large gathering room and provides direct views onto the covered lanai. A master suite and guest suite offer private retreats on the first floor; the bonus room and secondary bedrooms are located upstairs.



3730 Pre-Planned Options



FIRST FLOOR A/C: 2701
SECOND FLOOR A/C: 1029
TOTAL A/C: 3730
COVERED PORCHES: 299
GARAGES: 905
TOTAL COVERED: 4934

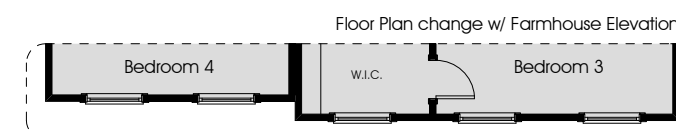
In the interest of continuous improvement, and to meet the changing market conditions, the builder reserves the right to modify the plans, specifications and products without notice or obligation. Square footage shown is an estimate and may vary. Depictions of homes and features are artist and designer conceptions. Landscape, interior surfaces and finishes may be decorator suggestions that are not included in purchase price. This ad contains general information about the community and is not an offer for the purchase of a new home.



(Adds 16' x 7' covered porch area with wiring and plumbing for Optional Outdoor Kitchen - additional 112 Sq. Ft.)

Other Options Shown:

Optional 12' x 8' Slider at Nook i.l.o. Windows; Optional 16' x 8' Slider i.l.o. 12' x 8' Slider at Gathering Room



In the interest of continuous improvement, and to meet the changing market conditions, the builder reserves the right to modify the plans, specifications and products without notice or obligation. Square footage shown is an estimate and may vary. Depictions of homes and features are artist and designer conceptions. Landscape, interior surfaces and finishes may be decorator suggestions that are not included in purchase price. This ad contains general information about the community and is not an offer for the purchase of a new home.

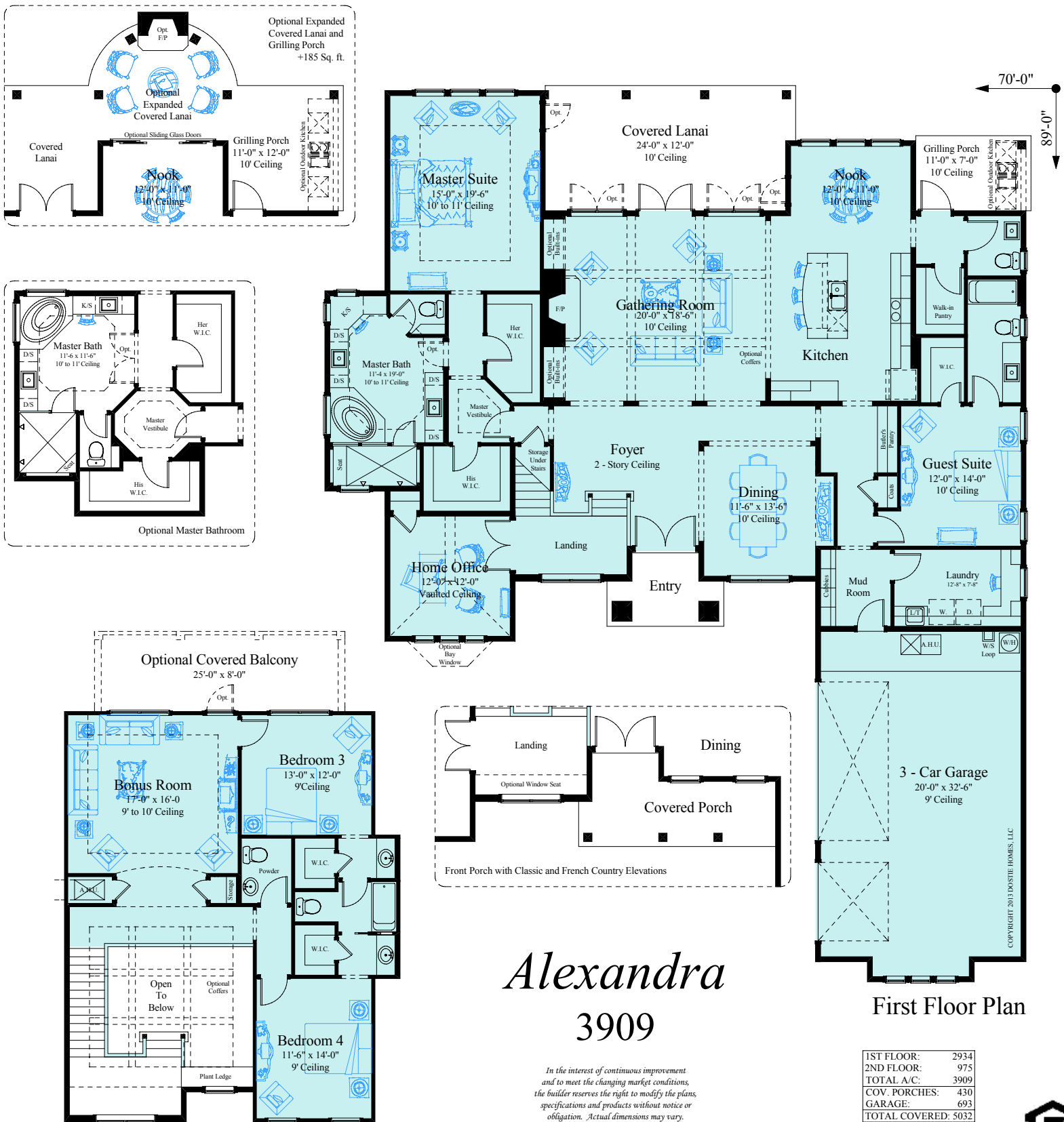
NOTED WORKS:

Alexandra

3909



Building on over 50 YEARS of Dostie Family Tradition



CBC #1258744



DOSTIE HOMES

DOSTIEHOMES.COM • 9301 OLD KINGS ROAD SOUTH • JACKSONVILLE, FL 32257 • (904) 739-9121 • FAX (904) 739-7292