

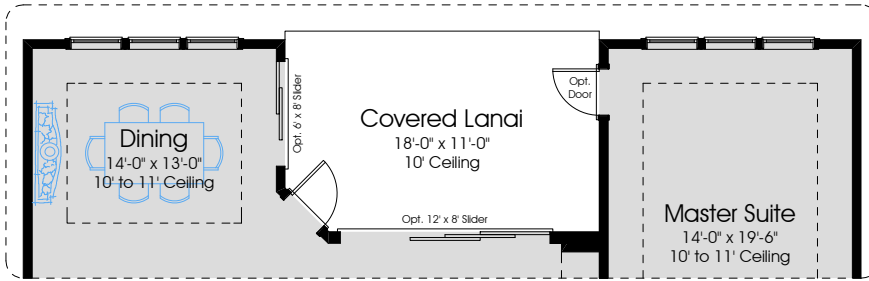
2503 Pre-Planned Options



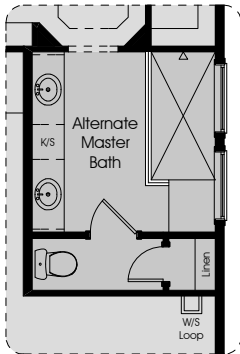
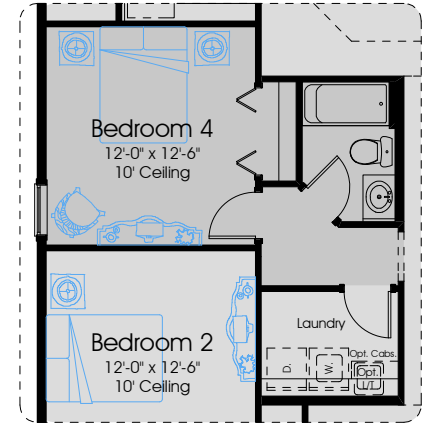
Heritage Collection

Additional Options

(Other Options Shown: Opt. French Door at Master Suite, Opt. 12' x 8' Slider at Gathering Room, Opt. 6' x 8' Slider at Dining)

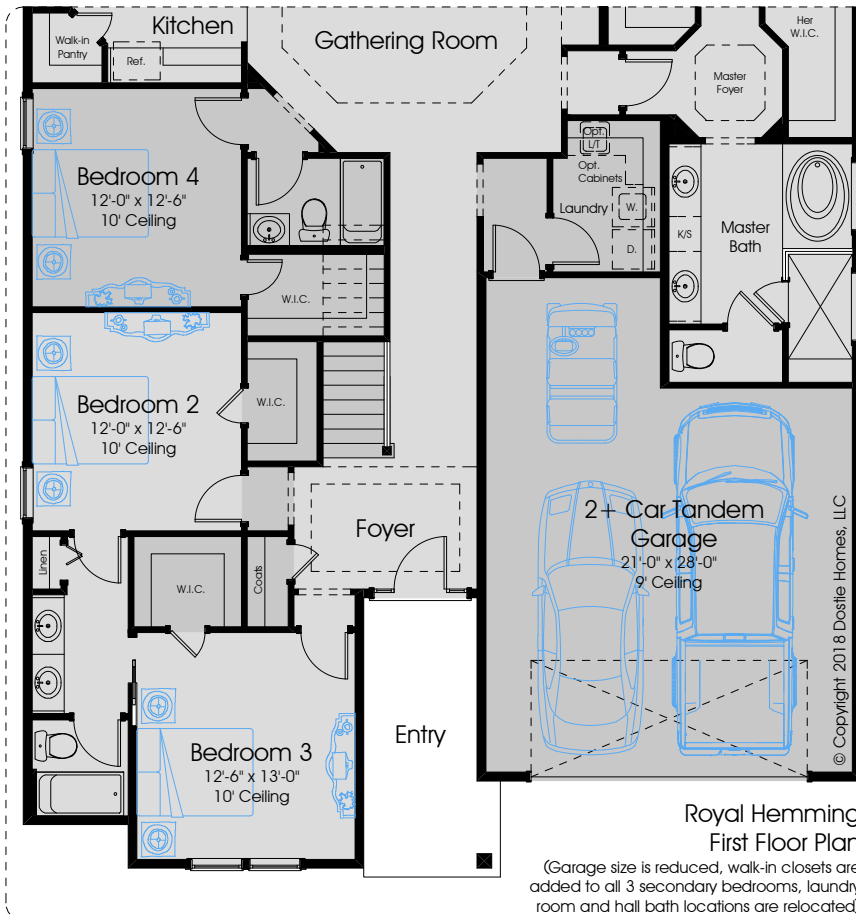


Optional Bedroom 4 (with 3rd full bath ILO powder room)



Optional Master Bath (Deletes tub and reconfigures space)

In the interest of continuous improvement, and to meet the changing market conditions, the builder reserves the right to modify the plans, specifications and products without notice or obligation. Square footage shown is an estimate and may vary. Depictions of homes and features are artist and designer conceptions. Landscape, interior surfaces and finishes may be decorator suggestions that are not included in purchase price. This ad contains general information about the community and is not an offer for the purchase of a new home.

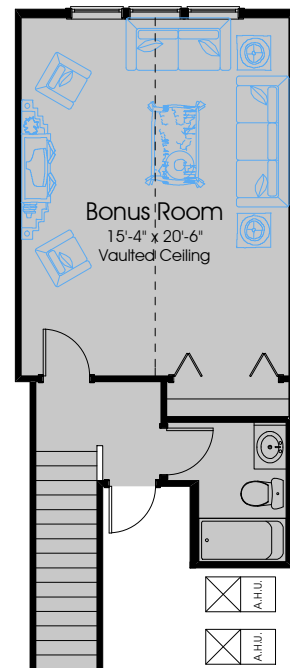


Royal Hemming First Floor Plan

(Garage size is reduced, walk-in closets are added to all 3 secondary bedrooms, laundry room and hall bath locations are relocated)

1st FLOOR A/C:	2579
2nd FLOOR A/C:	453
TOTAL A/C:	3032
COVERED PORCHES:	300
GARAGES:	552
TOTAL COVERED:	3884

2nd Floor - Bonus Room



Bonus Room Option

HIGHLIGHTS:

A modern, urban space that is adjacent to the main branch of the public library and Museum of Contemporary Art.